

Clandestine Transmitters
November 1942

Classification:
Eyes Only

1 Background

It has been brought to the attention of the director that clandestine transmitters have been detected in Johnson County in an area around the Terry Trueblood Recreation. It is believed that these transmitters are being operated by agents of the German Abwehr that have infiltrated the area.

It is believed that some of the stations are broadcasting using encoded conversational texts. These stations appear to all be operating on one frequency and time multiplexing their broadcasts.

Other stations are sending message traffic at varying word rates and appears, on the surface, to contain simple conversations. We believe the message content is updated on a regular basis after dark when the park is closed, and therefore uninhabited. These transmitters are to be located and their positions reported but otherwise are to be left undisturbed and operating so as not to alert the station operators that their locations have been detected.

At least one additional low power transmitter may be operating as a numbers station to provide Command & Control over field agents. This station is managed in much the same manner as the other clandestine transmitters, having their message content updated when the park is uninhabited. The same discovery protocol is to be used with these, leaving them undisturbed.

The transmitters may have poor frequency control causing operation slightly off frequency. This may have some unknown purpose or this may simply be equipment that is not properly adjusted. Please note issues with the signal quality on your log sheet.

2 Assignment

Your assignment is to locate these transmitters, marking them on the supplied map, and recording any identifying serial numbers that can be found on the transmitter. It is vital that they be left undisturbed so as not to warn the operators that they have been discovered.

Include any other pertinent information on the log sheet to assist our field agents in locating the transmitter, such as the message being sent.

There is a limited time window in which you can conduct operations without compromising the confidentiality of your effort. Your window is between 10:00 hours and 11:00 hours local time. Any transmitters not located within this window will be reacquired at the next available opportunity.

Office of Special Services

Known Operating Frequencies:

These frequencies are current best estimates.
The station transmitting frequency may drift due to equipment aging, poor setup or operator error.

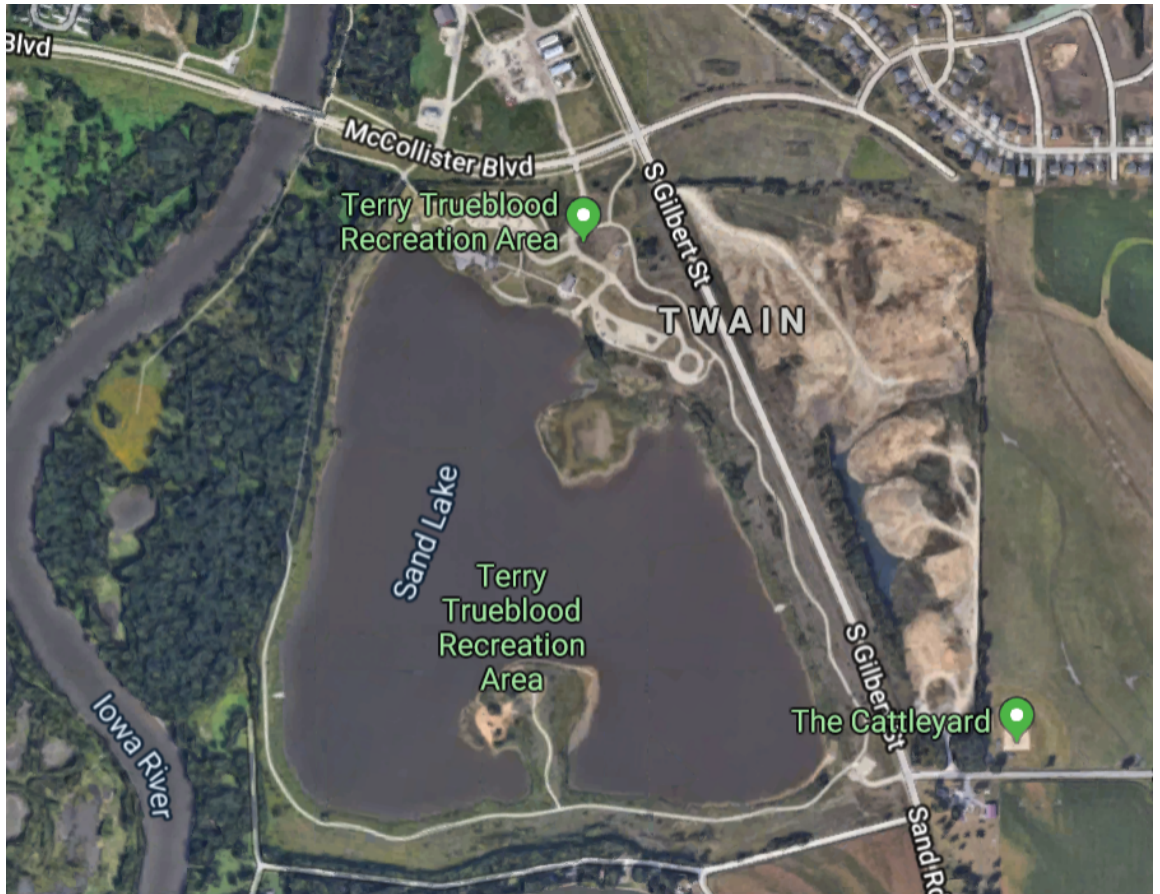
Frequency	ID Marking	Comments
144.250		
144.285		
144.305		
146.565		

April 24, 2020

FOX TRANSMITTER W0JY/13
Nickname: FOX13 144.250 MHz 102_73176_0.
ID: 454695 Power: 33.0mW Ref Xtal: 20.000
Valid 7 days from Fri Apr 3 14:22:48 2020
Iowa City Amateur Radio Club
Hickory Hill Park FOX HUNT
Event Validation Code: 4M4HCO6J

Example Identification marking with *ID*: value.

Record the 6 digit *ID* number if it can be found on the clandestine transmitter.



Programs

Number	length	WPM	Comments
S0=	01:15	25	75 Seconds, multi-tone
S1=	02:35	15	155 Seconds
S2=	02:00	35	120 Seconds
S3=	02:35	25	155 Seconds
S4=	02:45	35..13	165 Seconds
S5=	02:20	20	140 Seconds (time multiplex)
S6=	349		
S7=	349		
S8=	288		
S9=	...	20	ARRL Message

Stations

Name	Freq	Cycle	Start	Comments
FOX1	144.305	600s	75s	S5=
FOX2	144.305	600s	225s	S5=
FOX3	144.305	600s	375s	S5=
FOX4	144.305	600s	425s	S5=
FOX5	144.285	600s	0s	S5=
FOX6	144.285	600s	150s	S5=
FOX7	144.285	600s	300s	S5=
FOX8	144.285	600s	450s	S5=
FOX10	144.250	600s	0s	Talks about 185 sec.
FOX11	144.250	600s	200s	Talks about 185 sec.
FOX12	144.250	600s	400s	Talks about 185 sec.