

# PWB RELEASED AS 102-73161-27

FABRICATE TO IPC-6102D CLASS ~~IPC2~~

PARTS SUBSTITUTIONS TO BE PROCESSED THROUGH VENDOR SUPPLIED WEB INTERFACE

EXCELLON DRILL FILE  
102\_73161\_27drill .XLN

GERBER FILE STANDARDS INFORMATION  
UNITS INCHES  
TOOL UNITS INCHES  
COORDINATES ABSOLUTE  
NUMBER FORMAT 2.4

SURFACE FINISH HASL

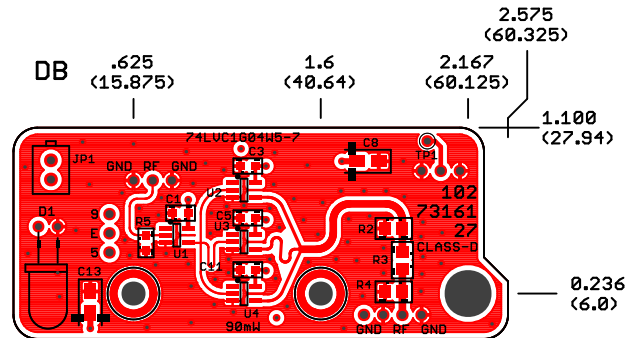
HOLE PLATING GUIDELINE  
HOLES WITH ANNULAR RING ARE TO BE PLATED  
HOLES WITHOUT AN ANNULAR RING ARE NOT TO BE PLATED

HOLE FILL GUIDELINE  
HOLES DRILLED 0.025" AND SMALLER ARE TO BE FILLED  
HOLES DRILLED 0.0255" AND LARGER ARE NOT FILLED.  
NOMINAL BOARD THICKNESS IS 0.062 INCH UNLESS SPECIFIED DIFFERENTLY

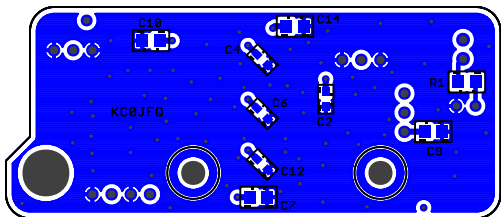
SPECIFIED BOARD THICKNESS

LAYERING ORDER		
ITEM	DESCRIPTION	GERBER FILE
1	TOP MARKING INK	102_73161_27gto .GTO
2	SOLDER MASK	102_73161_27gts .GTS
3	TOP COPPER 10Z	102_73161_27gm01 .GTL
4	LAMINATE	
5	COPPER 0.50Z	102_73161_27gm07 .G2L
6	LAMINATE	
7	COPPER 0.50Z	102_73161_27gm08 .G3L
8	LAMINATE	
9	COPPER 10Z	102_73161_27gm16 .GBL
10	SOLDER MASK	102_73161_27gbs .GBS
11	MARKING INK	102_73161_27gbo .GBO

HDR1	HDR2	HDR3	HDR4
CONNECTOR REQUIRED FOR THIS ASSEMBLY	CONNECTOR REQUIRED FOR THIS ASSEMBLY	CONNECTOR REQUIRED FOR THIS ASSEMBLY	CONNECTOR REQUIRED FOR THIS ASSEMBLY



Drawn	KC0JFQ	Date	TITLE: CLASS D AMP/3				The University of Iowa	
Designed	KC0JFQ	Date	PWB		Department of Physics & Astronomy		Iowa City, IA, USA	
Approval 1	KC0JFQ	Date	Plot: 1/29/20 9:23 AM	Save: not saved!	A102_73161_27			
			CAGE	Series	FOX TRANSMITTER	LAYERS	Number	REV:
			2D354	102		4	73161	27



080. 102\_73161\_27.dwg BOT COPPER 102

080. 102\_73161\_27.dwg BOT MARKING INK

**TITLE: CLASS D AMP/3**

**PWB**

**Date: not saved!**

The University of Iowa  
 Department of Physics & Astronomy  
 Iowa City, IA, USA

A102\_73161\_27

<b>CAGE</b> 2D354	<b>Series</b> 102	FOX TRANSMITTER	<b>LAYERS</b> 4	<b>Number</b> 73161	<b>REV:</b> 27
----------------------	----------------------	-----------------	--------------------	------------------------	-------------------

HDR1

HDR2

HDR3

HDR4

CONNECTOR  
REQUIRED  
FOR THIS  
ASSEMBLY

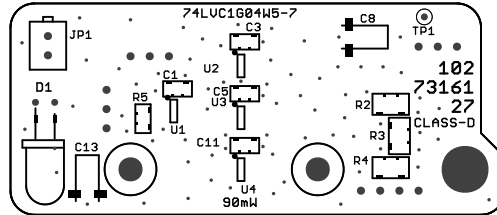
CONNECTOR  
REQUIRED  
FOR THIS  
ASSEMBLY

CONNECTOR  
REQUIRED  
FOR THIS  
ASSEMBLY

CONNECTOR  
REQUIRED  
FOR THIS  
ASSEMBLY

DB

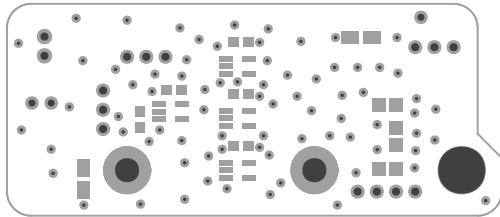
TOP MARKING INK 102\_73161\_27gto .GTO



TOP SOLDER MASK

102\_73161\_27gts

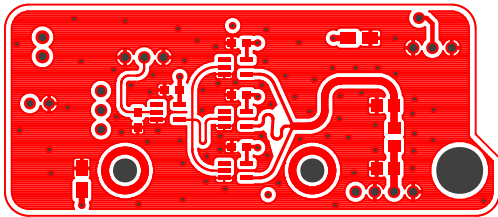
.GTS



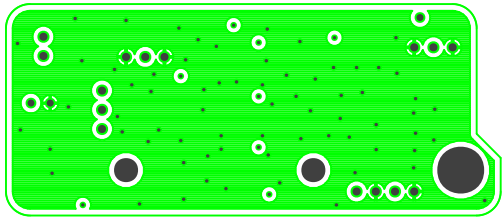
TOP COPPER 10Z

102\_73161\_27gm01

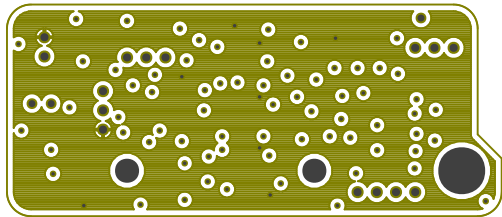
.GTL



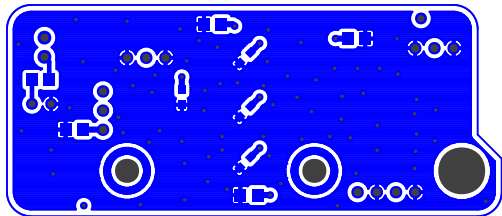
IN1 COPPER 0.50Z 102\_73161\_27gm07 .G2L



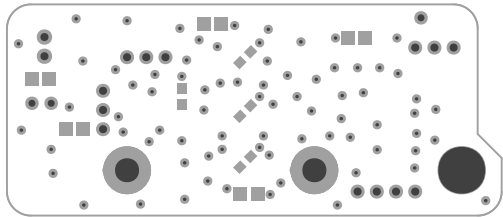
IN2 COPPER 0.50Z 102\_73161\_27gm08 .G3L



B0T COPPER 10Z 102\_73161\_27gm16 .GBL







BOT SOLDER MASK 102\_73161\_27gbs .GBS

