

# PWB RELEASED AS 102-73161-28

FABRICATE TO ~~IPC 6102D CLASS 2~~ → IPC2

PARTS SUBSTITUTIONS TO BE  
PROCESSED THROUGH  
VENDOR SUPPLIED WEB  
INTERFACE

EXCELLON DRILL FILE  
102\_73161\_28drill

## GERBER FILE STANDARDS INFORMATION

UNITS INCHES  
TOOL UNITS INCHES  
COORDIANTES ABSOLUTE  
NUMBER FOMRAT 2.4

SURFACE FINISH HASL

HOLE PLATING GUIDELINE  
HOLES WITH ANNULAR RING  
ARE TO BE PLATED  
HOLES WITHOUT AN ANNULAR RING  
ARE NOT TO BE PLATED

~~HOLE FILL GUIDELINE  
HOLES DRILLED 0.025" AND  
SMALLER ARE TO BE FILLED  
HOLES DRILLED 0.025" AND  
LARGER ARE NOT FILLED.~~

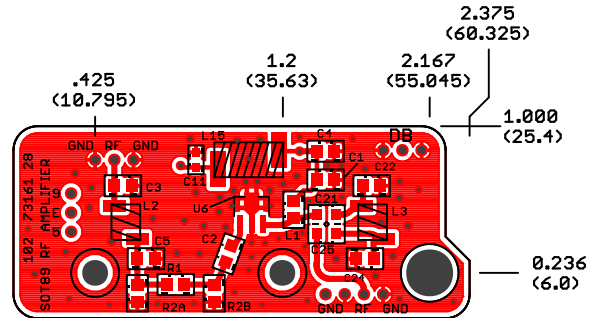
NOMINAL BOARD THICKNESS IS 0.062  
INCH UNLESS SPECIFIED DIFFERENTLY

### LAYERING ORDER

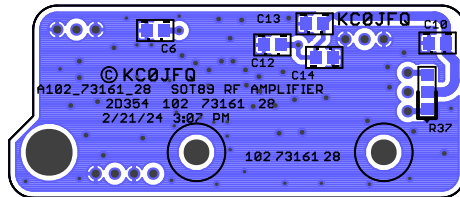
ITEM	DESCRIPTION	GERBER FILE
1	MARKING INK	102_73161_28gto
2	SOLDER MASK	102_73161_28gts
3	COPPER 10Z	102_73161_28gm01
4	LAMINATE	
5	COPPER 10Z	102_73161_28gm16
6	SOLDER MASK	102_73161_28gbs
7	MARKING INK	102_73161_28gbo

SPECIFIED  
BOARD  
THICKNESS

HDR1	HDR2	HDR3	HDR4
CONNECTOR REQUIRED FOR THIS ASSEMBLY	CONNECTOR REQUIRED FOR THIS ASSEMBLY	CONNECTOR REQUIRED FOR THIS ASSEMBLY	CONNECTOR REQUIRED FOR THIS ASSEMBLY



Drawn	KC0JFQ	Date	TITLE: SOT89 RF AMPLIFIER				The University of Iowa	
Designed	KC0JFQ	Date	PWB		Department of Physics & Astronomy			
Approval 1	KC0JFQ	Date	Plot: 2/21/24 3:07 PM	Save: 1/18/21 12:27 PM	A102_73161_28		Iowa City, IA, USA	
			CAGE	Series	FOX TRANSMITTER	LAYERS	Number	REV:
			2D354	102		2	73161	28



**TITLE: SOT89 RF AMPLIFIER**

**PWB**

**Date: 1/18/21 12:27 PM**

**A102\_73161\_28**

The University of Iowa  
 Department of Physics & Astronomy  
 Iowa City, IA, USA

<b>CAGE</b> 2D354	<b>Series</b> 102	FOX TRANSMITTER	<b>LAYERS</b> 2	<b>Number</b> 73161	<b>REV:</b> 28
----------------------	----------------------	-----------------	--------------------	------------------------	-------------------

HDR1

CONNECTOR  
REQUIRED  
FOR THIS  
ASSEMBLY

HDR2

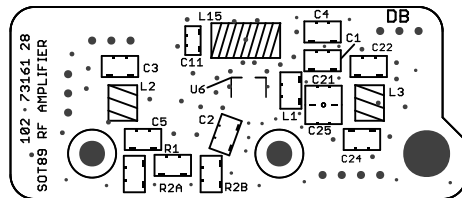
CONNECTOR  
REQUIRED  
FOR THIS  
ASSEMBLY

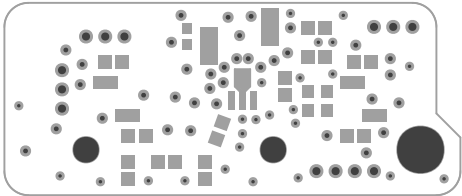
HDR3

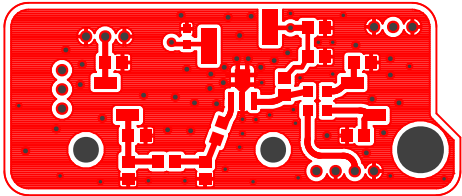
CONNECTOR  
REQUIRED  
FOR THIS  
ASSEMBLY

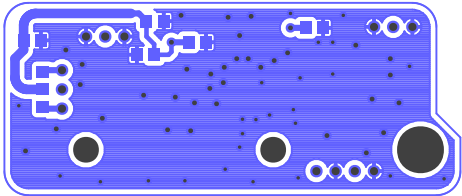
HDR4

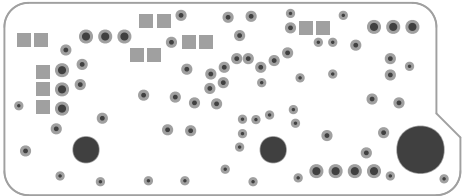
CONNECTOR  
REQUIRED  
FOR THIS  
ASSEMBLY











C10

KC01F0

C13

C6

C15

C14

©KC01F0

A105\_731E1\_58 2018A RF AMPLIFIER

SD324 105 731E1\_58

2/21/54 3:05 PM

R35

105 731E1 58