

Clandestine Transmitters
November 1942

Classification:
Eyes Only

1 Background

It has been brought to the attention of the director that clandestine transmitters have been detected in an area around the Kent Park area. It is believed that these transmitters are being operated by special agents of the Japanese Military Intelligence Office that have infiltrated the area.

At least one set of stations appear to be broadcasting using encoded conversational texts. The message traffic is being sent at varying word rates and appears, on the surface, to contain simple conversations. We believe the message content is updated on a regular basis after dark when the park is closed, and therefore uninhabited. These transmitters are to be located and their positions reported but otherwise are to be left undisturbed and operating so as not to alert the station operators that their locations have been detected.

Additional low power transmitters may be operating as a numbers station to provide Command & Control over the field agents. This station is managed in much the same manner as the other clandestine transmitters, having their message content updated when the park is uninhabited.

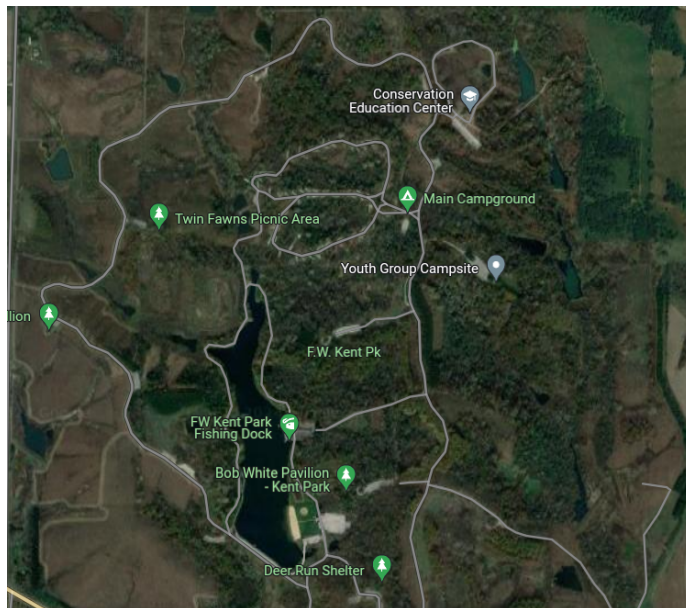
Several of the transmitters may have poor frequency control causing operation slightly off frequency. This may have some unknown purpose or this may simply be equipment that is poorly adjusted. Please note issues with the signal quality on the log sheet.

2 Assignment

Your assignment is to locate these transmitters, marking them on the supplied map, and recording any identifying serial numbers that can be found on the transmitters.

Include any other pertinent information on the log sheet to assist our field agents in locating the transmitter, such as the message being sent.

There is a limited time window in which you can conduct operations without compromising the confidentiality of your effort. Your window is between 10:00 hours and 12:00 hours local time. Any transmitters not located within this window will be reacquired at the next available opportunity.



Known Operating Frequencies:

These frequencies are current best estimates.

The station transmitting frequency may drift due to equipment aging, poor setup or operator error.

Frequency	ID Marking	Comments
144.225		
144.285		
144.325		

February 23, 2025

Example Identification marking with *ID*:

FOX TRANSMITTER **W0JV/FOX22**
Nickname: FOX22 144.225 MHz 102_73181_10
ID: 113980 Power 80.0mW S/W V3.90
Valid 7 days from Sat Feb 22 20:30:52 2025
Iowa City Amateur Radio Club
ICARC Fox Hunt
Event Validation Code: 144.225/WL6M5H3M

This label has the 6 digit *ID* number and the *Event Validation Code* string that identify this *clandestine* transmitter.

Sample Log Card

**ICARC Fox Hunt
Transmitter Capture LOG (V3.00)**

Hunter Callsign

Hunt Date Card

Nick	ID	Valid Code
FOX	<input type="text"/>	<input type="text"/>
FOX	<input type="text"/>	<input type="text"/>
FOX	<input type="text"/>	<input type="text"/>
FOX	<input type="text"/>	<input type="text"/>
FOX	<input type="text"/>	<input type="text"/>
FOX	<input type="text"/>	<input type="text"/>
FOX	<input type="text"/>	<input type="text"/>
FOX	<input type="text"/>	<input type="text"/>
FOX	<input type="text"/>	<input type="text"/>

Record the *ID* and the *Valid Code* for each transmitter that you locate.

There may be cards rubber-banded to the transmitter. In this case you can simply retrieve ONE card to verify the transmitter was located.